

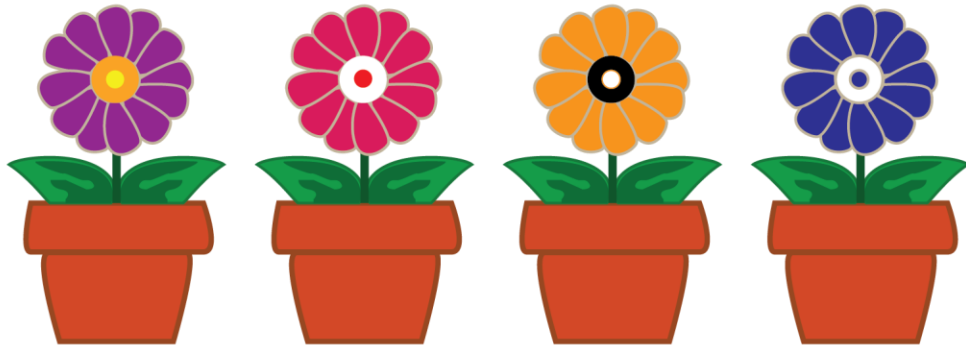
Platte County

Master Gardener Program

Annual Report 2025



EXTENSION MASTER GARDENERS of PLATTE COUNTY



Website: plattecountymastergardeners.org
Email: plattemgs@gmail.com

Platte County

Master Gardener Program

Local Impact

Number of Volunteers – 46

Number of Volunteer Hours – 4,372.6

Dollar Value of Volunteer Hours - \$152,122.75*

(*[Independent Sector](#) at \$34.79/hour)

Number of New Volunteers – 13

Number of Continuing Education Hours – 351

Number of Advanced Training Hours – 0

Pounds of Produce Donated – 500

Value of Pounds of Produce Donated - \$965.00*

(*[Feeding America](#) at \$1.93/pound)

Number of Chapter-led Education Events – 19

Number of Participants in Education Events – 1,284

Number of Hotline Questions Answered – 18

Social Media Analytics – 0

Projects/Activities:

- Tree pruning workshop at YMCA Platte County Community Center South - February 15, 2025
- Tree pruning demonstration at Platte County Community Garden – February 15, 2025
- Prairie Point Elementary STEAM Night Demonstration Booths – March 6, 2025
 - Pollinators: Not just bees and butterflies
 - Plant a pollinator plant and take it home
 - Using Photosynthetically Active Radiation (PAR) to affect plant production.
- Building Raised Garden Bed Demonstration at Platte Community Garden – March 8, 2025



Platte County

Master Gardener Program

Local Impact

Projects/Activities (Continued)

- Plant & Grow Seed Potatoes Workshop at Platte Community Garden – March 22, 2025
- EMGPC Information Display at Mid Continent Library Platte City Branch – Month of April, 2025
- Soil Testing Workshop at Platte Community Garden – April 5, 2025
- Plant & Grow Roses Workshop at Platte Community Garden – April 12, 2025
- EMGPC Information Display at Mid Continent Library Parkville Branch – Month of May, 2025
- Four (4) EMGPC members hosted tours of their gardens May, June, August, and September 2025. Each provided detailed discussion of design, use of plants including natives, successes, failures and lessons learned.
- EMGPC First Annual Spring Plant Sale at Leased Platte City Greenhouse – May 3-4, 2025
- Plant & Grow Tomatoes Workshop at Platte Community Garden – May 17, 2025
- National Extension Leadership Development Conference Tour of EMGPC Greenhouse – June 11, 2025
- EMGPC Fall Native Plant Sale at Platte City Greenhouse – September 13, 2025
- Tour of EMGPC Platte City Greenhouse for Interns of EMG training – October 8, 2025
- Cold Stratifying Native Seeds Workshop at EMGPC Greenhouse Platte City – October 29, 2025
- Training for EMGPC & 4-H volunteers & planting native plants at the Kansas City Northern Miniature Railroad – November 8, 2025
- Plant & Grow Garlic Workshop at Platte Community Garden – November 1, 2025
- Cold Stratifying Native Seeds in Milk Jugs Workshop at EMGPC Greenhouse – November 13, 2025
- EMGPC Conducts Design Team Kickoff for KCNRR, KCMO Parks cooperative partnership to transition 3-5 acres of mixed grasses and invasives to native plants for pollinators at MCPL Greenhills Branch – December 4, 2025

Impact Stories

- EMGPC leased a greenhouse from Northland Career Center that had not been used or maintained for years. After 4 months of cleaning 3,000 plants were grown for the first Spring Plant sale. Gross revenues over \$10,000 resulted exceeding expectations.
- The general public was invited to all workshops. Flyers made and displayed at libraries, community centers, via social media and news releases. This resulted in recruitment of new members as well as public interest.
- At Prairie Point Elementary STEAM night 205 youth and family received hands on experience planting pollinator seeds, exploring insects, and seeing and tasting micro-greens grown under PAR lighting. The project lead for the Kansas City Northern Miniature Railroad in Frank Vaydik Park at Line Creek was in attendance and later asked for EMGPC assistance in creating pollinator gardens.
- A gentleman attending the EMGPC Spring Plant Sale remarked on the variety and quality of flowers grown. He purchased flowers to plant in memory of his recently deceased wife.
- EMGPC is working with the Kansas City Northern Miniature Railroad and Kansas City Missouri Parks to draft and execute a cooperative agreement to transition 3-5 acres of grasses and invasives around KCNRR to native plants for pollinator gardens. The agreement will include dedicated areas for EMGPC to establish a children's teaching garden and a community teaching garden.
- Chapter membership increased from the three (3) founding members to 46 including 12 Interns.
- 500 lbs of produce grown by EMGPC at Platte Community Garden was donated to a local food pantry.
- Our partner LAUGH Foundation provided over \$1,000 in "in-kind" contributions to the chapter and received space in the greenhouse to grow for their own fund-raising event.

Platte County

Master Gardener Program

Profiles and Stories



MU EXTENSION & PLATTE COUNTY MASTER GARDENERS PRESENT

FREE WORKSHOP TREE PRUNING

PLATTE COUNTY EXTENSION OFFICE
816-270-2141

Dr. Higgins will discuss and demonstrate proper pruning technique for trees, sharpening and maintaining pruning shears, and dormant oil sprays for fruit trees. Workshop will be held outdoors, so come dressed for the weather.

FEBRUARY 15, 2025

CLASS BEGINS 10AM
PLATTE COUNTY COMMUNITY CENTER SOUTH/YMCA
8875 CLARK AVE PARKVILLE, MO 64152

OUTDOOR DEMO 11:15AM
PLATTE CO COMMUNITY GARDEN
10609 TOM WATSON PKWY
PARKVILLE, MO 64152

REGISTER HERE: 



Extension Field Specialist in Horticulture Dr. Todd Higgins conducted the workshop with classroom instruction followed by a demonstration of proper pruning techniques and an opportunity for participants to get comfortable with hands-on experience. Below an Extension Master Gardener prepared the training site in advance by removing a dead peach tree and removing debris from the area.



Platte County

Master Gardener Program

Profiles and Stories



EMGGKC Member Nicole LaPlante and EMGPC Interns Melissa Cunningham and Sandy Jacobs introduce students and parents to the wonderful world of pollinator insects at the Prairie Point Elementary School STEAM night March 6, 2025.



EMGPC Member John "Smitty" Smith and a volunteer from LAUGH Foundation prepare micro-green samples for students and parents to eat while learning about using Photosynthetically Active Radiation (PAR) to affect plant growth and production. It's true that over 95% who sampled the micro-greens loved them! And they thought the lights were cool too!

EMGPC member Melissa Cunningham helps a youth plant a pollinator seed in a pot to take home and grow. This tabletop demonstration was sponsored by EMGPC partner LAUGH Foundation.



Platte County

Master Gardener Program

Profiles and Stories



EMGs Scott Wilkerson, John "Smitty" Smith and Kevin Blusher demonstrate how to build a raised bed garden using recycled 2"x6" boards. The lumber was an "in-kind" donation valued at about \$400. Each bed was double thickness joined with deck screws. One bed was two stacked boards high with a depth of 11 ½ ". Workshop participants assembled the 2nd bed under instruction of the EMG presenters.



Platte County

Master Gardener Program

Profiles and Stories



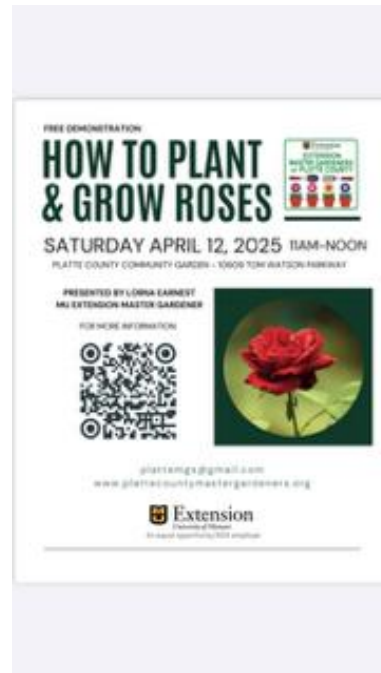
Platte Community Garden Coordinator EMG John "Smitty" Smith conducts the potato seed planting workshop Saturday March 22, 2025. Workshop participants learned how to lay out the beds to properly space potatoes and plant so they grow and produce a bountiful crop. When harvested the potatoes were "cured" and donated to a local food bank.



Platte County

Master Gardener Program

Profiles and Stories



EMG Lorna Earnest conducted a workshop on how to plant and grow roses at the Platte Community Garden April 12, 2025. EMG Earnest is a dual member of EMGPC and Extension Master Gardeners of Greater Kansas City contributing her knowledge and energy to both chapters.



Platte County

Master Gardener Program

Profiles and Stories



EMGPC maintains three 10'x20' garden beds, a 6'x30' native plant bed, fruit trees, grape vines, blackberry and blueberry bushes at the YMCA Platte Community Garden at the National Golf Course in Parkville. The garden under Coordinator EMG John "Smitty" Smith was the location used to conduct six public education workshops during 2025 and grow and donate 500 lbs of fresh produce to a local food bank. EMG partnership with the YMCA began over 10 years ago and continues strong.



Platte County

Master Gardener Program

Profiles and Stories



October 2024 EMGPC with support from the Platte County Extension Council leased a 60'x30' greenhouse from Northland Career Center. Four months of extensive cleaning and repairs were needed before the first of 3,000 seeds were planted producing vegetables, herbs, annuals, natives and exotics that were sold at the first annual spring plant sale. In addition to fundraising support the greenhouse is a year-round educational location with more programs being added in the future.



Platte County

Master Gardener Program

Profiles and Stories



EMG's and public participants learn how to cold stratify native seeds in a refrigerator for seed germination. Some native seeds require up to 90 days of cold before germination is complete and seeds are ready to be planted.

EMG Mary Jane Kuehn conducts a workshop on winter stratifying native plants outside using gallon milk jugs. Participants learned how to prepare the cleaned jugs with air and drain holes, fill with 3-4 inches of moistened soil and plant native seeds. The jugs are placed outside uncovered without cap over winter for seeds to germinate. This technique may also be used for early season plants like spinach, peas, etc.



Platte County

Master Gardener Program

Profiles and Stories



Edible Nasturtium in the foreground and a variety of native plants for sale at the first annual spring plant sale in the greenhouse.



EMG John "Smitty" Smith in the background with EMG Interns Bryan Woodring and Lesley Rausch-Derra transplanting native plants grown in the green house into the raised beds next to the greenhouse to over winter.

Attendees of the National Extension Leadership Development Conference traveled from the UMKC campus to tour the Greenhouse on June 11, 2025. Inside the greenhouse it was a balmy 100 degrees while EMG's Scott Wilkerson and Chapter President Carolyn Vellar discussed the history of leasing the greenhouse, the success of the first spring sale, maintenance and operations, and the chapter relationship with the Platte County Extension Council.



Platte County

Master Gardener Program

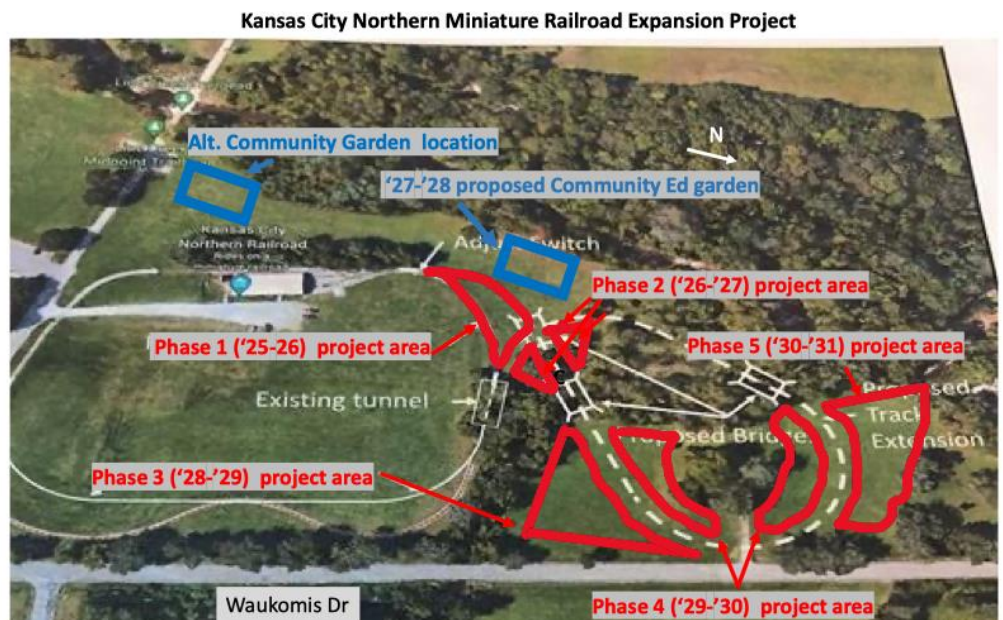
Profiles and Stories



EMGPC is working with the Kansas City Northern Miniature Railroad and Kansas City Missouri Parks to create a cooperative agreement for the purpose of transitioning 3-5 acres of Frank Vaydik Park around the railroad from mixed perennial grasses and invasives to native grasses and plants providing pollinator gardens for public use, enjoyment and education.

EMG's and Platte County 4-H volunteers prepared a 240 square foot bed and planted 60 native plants and grasses by the sign on November 8, 2025.

The adjacent image shows the expansion doubling the railroad track length. The expansion was completed and open to the public October 2025 and is expected to increase annual visitors from 60,000 to 75,000. The red outlined areas are proposed for pollinator plantings and the blue outlines are proposed areas for EMGPC to establish a children's teaching garden and a community teaching garden.



Proposed KCNRR + EMGPC Native Wildflower/ Butterfly Sanctuary Development